

DL product range

Standard air dehumidifiers



High performance desiccant rotor

Configurable access easement

Easy maintenance

High efficiency fans with EC motor

Adjustable airflows with potentiometer



Description

The DL range of dehumidifiers is designed to meet the different needs of users in construction and industry, particularly for the storage, conservation and preservation of equipment and buildings.

DL rotary dehumidifier operate using the process of dehumidifying air with solid adsorbents. The DL works by adsorption with a high performance Silicagel desiccant rotor continuously reactivated.

Furthermore, they include a painted steel casing, two fans with EC motor (Electronically Commutated) on control potentiometer, two air filters (G4), an electric heater, an electrical power and control cabinet.

Operating principle

The DL system uses two independent, counter-current air flows through the slowly and continuously rotating desiccant wheel. The main flow, the process air is dried.

The secondary flow, the regeneration air, of smaller volume, is used to remove the moisture retained by the desiccant wheel. Two fans set the two air flows in motion.

Silica gel is a highly hygroscopic material capable of retaining water vapour from the ambient air. As the air passes through the wheel, it loses the moisture retained by the silica gel. The dry air can then be used directly.

The regeneration air removes the moisture retained by the silica gel from the wheel.



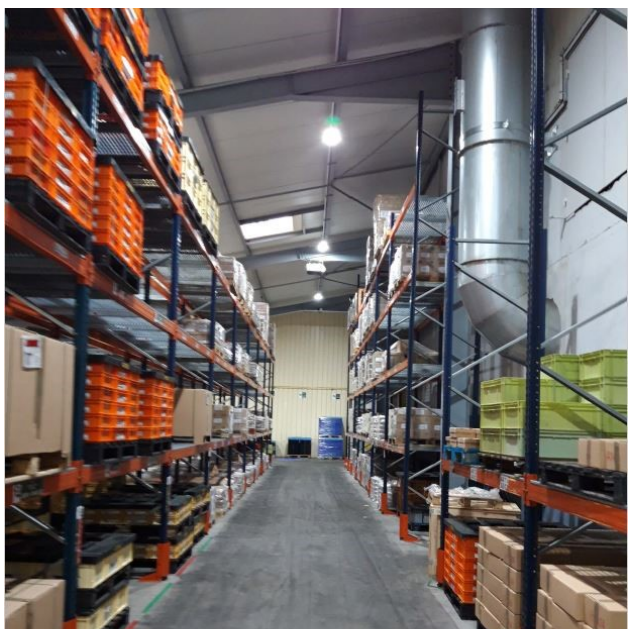
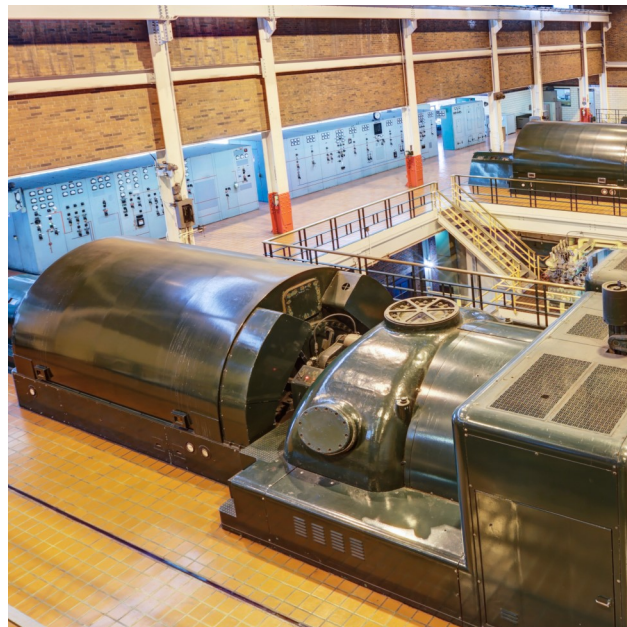
Applications

The DL range is naturally used in all humidity maintenance applications such as storage, conservation and preservation of equipment and buildings.

They are designed to treat air and to be installed in environments between -15°C and 40°C .

The control of hygrometry makes it possible to:

- Fight against corrosion
- Protect against condensation
- Prevent mould appearance
- Reduce the drying time in the construction
- Preserve during storage
- Prevent moisture regain in hygroscopic materials
- Prevent clogging or caking



Selection

In addition to the adsorption air dehumidification system, DL units can be supplied with the following equipment and functions:

→ Standard configuration

- Configurable easement (left or right)
- Regeneration temperature viewer
- External start
- Operating feedback
- G4 internal filtration

→ In options

- Humidity control (on–off-control)
- Operating time
- Filter clogging
- Mounted on frames with wheels and equipped with lifting rings
- External filter box (G4 to M6)

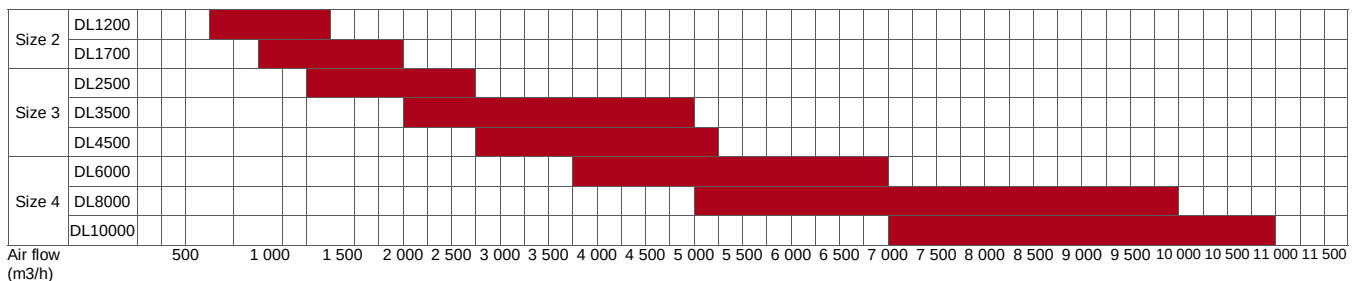
Each DL unit is equipped with an electrical cabinet containing the power and control elements with:

- Switch control
- Potentiometer
- Thermostat

Selection of a DL unit

The size of a DL unit depends mainly on the face speed of the air on the internal components, and therefore on the air flow process.

The following quick selection tables are only based on the desiccant wheel.

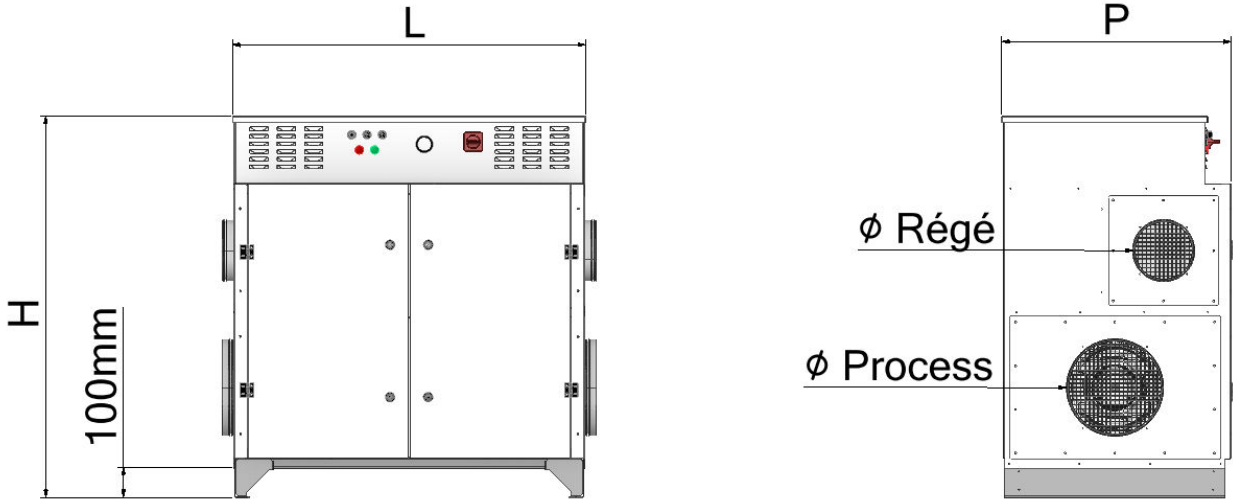


DL Range		Nominal air flow	Dehumidification capacity (20°C to 60% HR)	Electrical power
Size 2	DL1200C	1200 m ³ /h	8,2 kg/h	11,25 kW
	DL1700D	1700 m ³ /h	10,4 kg/h	13,50 kW
Size 3	DL2500E	2500 m ³ /h	13,9 kg/h	18,00 kW
	DL3500F	3500 m ³ /h	16,2 kg/h	20,25 kW
			20,6 kg/h	27,00 kW
	DL4500G	4500 m ³ /h	21,8 kg/h	27,00 kW
	DL4500G		25,5 kg/h	33,75 kW
Size 4	DL6000I	6000 m ³ /h	35,1 kg/h	47,25 kW
	DL8000I	8000 m ³ /h	37,7 kg/h	47,25 kW
	DL8000J		45,2 kg/h	60,75 kW
	DL10000J	10000 m ³ /h	48,2 kg/h	60,75 kW
	DL10000K		54,1 kg/h	74,25 kW

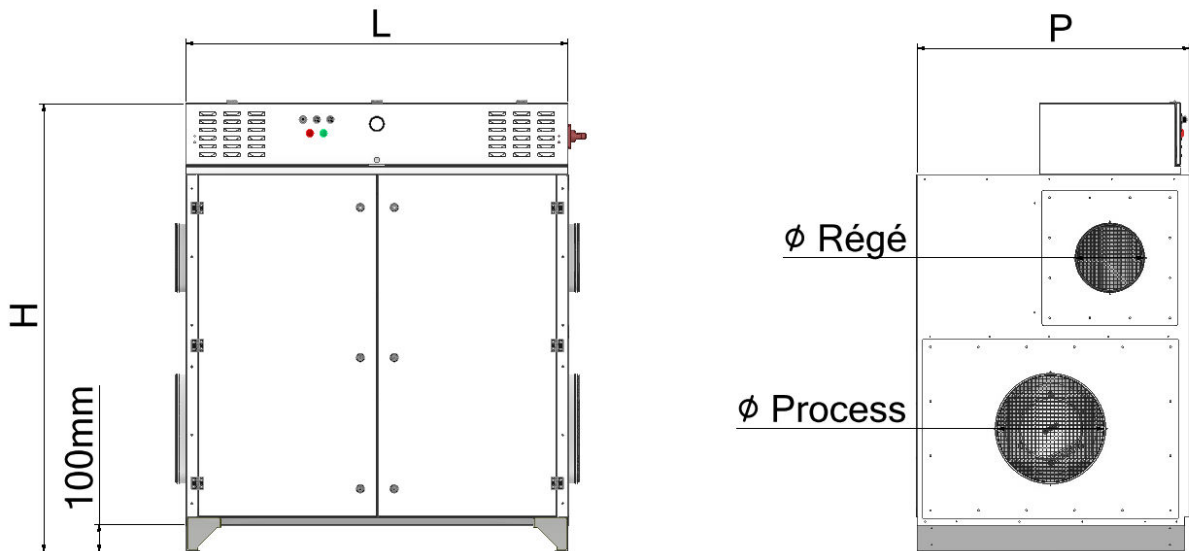
Dimensions

The DL units are made up of a central block and an electrical cabinet on top.

Size 2



Size 3 & 4



	Length	Height	Depth (P)	Ø Process	Ø Régénération
Size 2	1160	1252	750	315	200
Size 3	1400	1642	1017	400	250
Size 4	1800	1792	1290	630	315

Dimensions in mm